

TYPE 52P

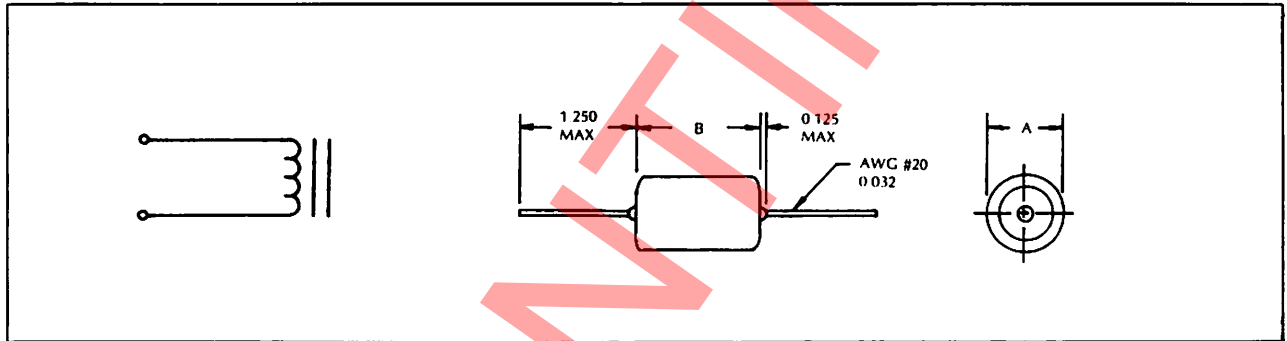
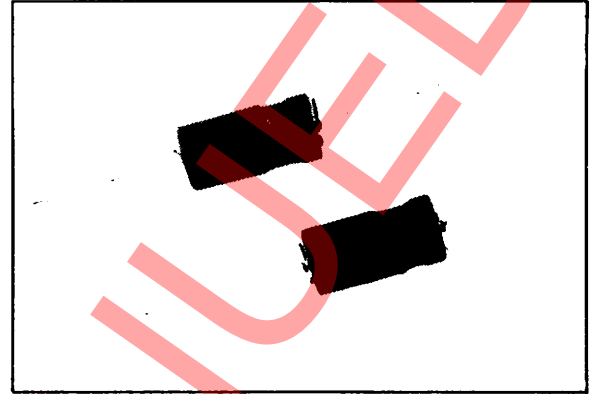
HIGH CURRENT FILTER CHOKE IN AXIAL LEAD

FEATURES

- * Designed for use with switching power supplies
- * Printed circuit mounting, axial leads
- * Low cost construction
- * Pre-tinned leads

SPECIFICATIONS

- * **Operating Temperature:** -55°C to +105°C
- * **Inductance:** measured at 1 KHz with no DC current
- * **Rated Current:** continuous operating at +25°C
- * **Winding:** Layered solenoid type with magnetic core



PART NUMBER	INDUCTANCE	RATED CURRENT	DCR	DIMENSIONS	
	μH	AMP.	OHM	A	B
	$\pm 10\%$	MAX.	MAX.	MAX.	MAX.
52P5101	50	1	0.12	0.45	0.85
52P5102	100	1	0.18	0.45	0.85
52P5103	250	1	0.30	0.45	0.85
52P5104	500	1	0.50	0.45	0.85
52P5105	1000	1	0.75	0.55	1.10
52P5201	27	2	0.085	0.45	0.85
52P5202	50	2	0.105	0.45	0.85
52P5203	100	2	0.155	0.45	0.85
52P5204	250	2	0.275	0.55	1.10
52P5205	500	2	0.450	0.75	1.10
52P5301	5	3	0.025	0.45	0.85
52P5302	10	3	0.035	0.45	0.85
52P5303	27	3	0.060	0.45	0.85
52P5304	50	3	0.075	0.45	0.85
52P5305	100	3	0.125	0.55	1.10